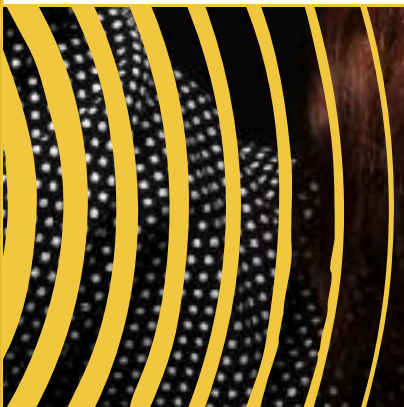
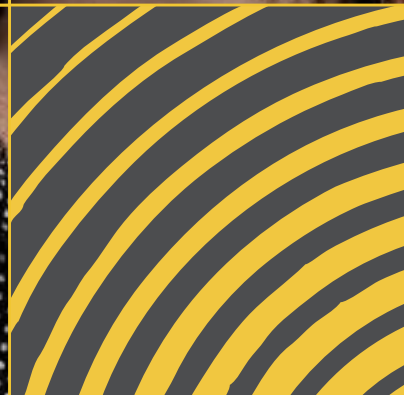




ringlite
converter



BOWENS
the power behind the picture



THE RINGLITE REVOLUTION

Taking photographs with a ringflash has traditionally been an expensive and niche area of professional photography.

The Ringlite Converter from Bowens is a light shaping modifier that allows photographers at all levels the opportunity to get creative with the ringflash effect.

Simply attach the Ringlite Converter to any Bowens monolight or generator flash head and you're ready to shoot stunning ringflash style photography.

© Photo by Christian Hough
www.christianhough.com
Model: Kayt Webster-Brown
Agency: www.kokomodels.com
Make-Up: www.juliecooper.com







Ringflash photography has become one of the most sought after and 'in-vogue' styles of professional photographic lighting in today's fast moving world of photography.

Since the ringflash's early origins, the unique lighting effect that it offers has grown in popularity to worldwide acclaim among professional and amateur photographers alike.

The simplicity and ease of ringflash photography means that more and more photographers are venturing into it; exploring the creative possibilities that are opened up by this unique light shaping tool.

The versatility of ringflash photography, and the benefits that are gained by the effect given to different photographic applications, means that photographers from all fields are making room for a ringflash in their arsenal of lighting products.

The **Ringlite Converter** from Bowens is a unique and affordable light modifier that opens up the option of ringflash style photography to a whole new generation of ringflash enthusiasts.



ringlite
convertor



© Photo by James Brown - www.jamesbrownphotography.com

Bowens have produced a unique solution for the smaller studio and price conscious photographer; the Ringlite Converter, an innovative device which offers photographers a durable and portable ringlight effect at a fraction of the usual cost of traditional ringflash.

The **Ringlite Converter** is compatible with all Bowens flash heads that use the standard 'S'-type adaptor accessory fitting. To mount your camera to the Ringlite use either the portrait or landscape bracket provided and fit the lens through the centre aperture to shoot.

“the quality of light output from this device will not disappoint...”

British Journal of Photography (09/01/08)

With the Ringlite Converter, you won't need to worry about all the additional equipment that usually goes hand-in-hand with a ringflash - this special attachment easily transforms your existing Bowens flash head into a ringflash style light.

The beauty of the Ringlite is its ability to eliminate stark shadows from the subject while creating a softer, more pleasing light than conventional systems; all of which will be accentuated by striking circular ringflash catchlights.



The Ringlite makes no compromise on build-quality or performance, whilst only being a fraction of the cost of a traditional ringflash system,

Bowens product development team have assured that only the highest quality materials have been used in the design and construction of the Ringlite to guarantee a product that meets the demands and expectations of today's professional photographic studios.

The Ringlite is constructed using a combination of rigid aluminium die-casting for a hard wearing, long lasting body and a high-impact, fire retardant polycarbonate to withstand any accidental knocks creating a durable, lightweight unit.

To produce an even flash output, the combination of a white painted interior along with an internal mirror directly above the flashtube have been used to bounce the light around the inside of the Ringlite.

“I’d say the Ringlite is set to be a world-beater” Jon Gray ABIPP

The Ringlite also includes a removable, laser-cut, high quality 4mm thick opal perspex diffuser which produces a softer light that is perfect for portraiture and beauty work.

ringlite

convertor

SPECIFICATIONS

PART CODE	BW-1790
DIAMETER	21.5cm / 8 1/2"
HEIGHT	35cm / 13 3/4"
WIDTH	22cm / 8 3/4"
DEPTH	11.5cm / 4 1/2"
MOUNTING	'S'-Type Bayonet
CENTRE APERTURE	9.5cm / 3 3/4"
ANGLE	55°
WEIGHT (INC. PORTRAIT BRACKET)	1.45Kg / 3.2lbs



For more technical, precision photography the Ringlite includes both a landscape and a portrait bracket for when fine tuned adjustments are necessary. The portrait bracket is an extension of the landscape bracket and attaches using the camera mount screw provided.

Both the landscape and the portrait brackets are made from steel and aluminium for a strong, supportive system that is able to accommodate and hold in place a large number of professional level cameras. To ensure the landscape bracket is correctly guided when positioning either up or down, the rear body of the Ringlite has slightly raised lips where the bracket sits, ensuring the bracket cannot be placed off axis.

To allow the smooth and correct positioning of the portrait bracket, two guidance plugs have been incorporated either side of the bracket enabling it to move back and forward along the landscape bracket, again to ensure that the bracket cannot be positioned off axis.

The Bowens 'S'-type adaptor which is mounted to the Ringlite is removeable and can be adjusted to various positions allowing backwards compatibility through the entire range of Bowens flash heads that use the 'S'-type accessory fitting.



“a whole **new world**
of creativity”

© Photo by Christian Hough
www.christianhough.com
Model: Yulia Zaytseva
Agency: www.kokomodels.com
Make-Up: www.juliecooper.com

Ringlite Photographers.

Ringflash photography and the effect it offers can be beneficial to numerous photographic applications.

“a **unique** and affordable light
modifier”

To test the effect of the Ringlite within various photographic fields, Bowens asked two professional photographers working in completely different areas to see just how versatile and useful it can be.

Ian Shipley. IS Photographic.

Ian Shipley has been an established professional photographer for many years now, having his work published in countless magazines, books, CD's and most recently on greeting cards. Ian is currently based in the Midlands in England where he is undertaking various commissions for editorial and advertising purposes.

Ian was the principal photographer for the recently published 'Hot Rod Showcase' and is also the photographic element of the creative trio behind the 'Violent Veg' cartoon series.

www.isphotographic.co.uk
www.violentveg.com



“I chose the Bowens range of lighting products over other brands due to the versatility and control that their lights offer to me when shooting at both ends of the scale, from full size car shoots on location thanks to the Bowens Travel-Pak battery system all the way down to the small scale ‘Violent Veg’ cartoons that I shoot on a table-top set-up.

When it comes to shooting the table-top cartoons and other small scale scenes the key problem is the actual scale of the sets, in the example of the “Stewed prune” cartoon (pictured above), the main issue is the control of light in a confined space. This is where the unique capabilities of the Ringlite

comes into play. Previously, being so close to the subject meant that the actual camera lens would sometimes cast a shadow, with the Ringlite this is a thing of the past. The combination of the Ringlite Converter with the accuracy of a Bowens flash head allows me complete control over my lighting, and with the added ability to attach diffusers and colour gels it opens up a whole new world of creativity for me.

The Ringlite really comes into its own by filling the void left between a traditional Macro ringflash and the standard studio lighting set up”.



© Photo by Christian Hough
www.christianhough.com
Model: Kayt Webster-Brown
Agency: www.kokomodels.com
Make-Up: www.juliecooper.com

Christian Hough.

Christian has developed his skills as a photographer through time and experience, bringing along with him a fresh approach and a unique photographic look. His recent commercial work has been published in 'Tatler', 'Vanity Fair' and 'Homes and Gardens'.

Christians photographic work covers all aspects of fashion, editorial and beauty; shooting both digitally and on medium format. Among his recent projects are writing lighting technique features and tutorials for various magazines.

www.christianhough.com

"Since I've been using the Ringlite Converter I've found that it's developed into an invaluable tool in my collection of lighting accessories, I don't know what I'd do without it now.

Personally I'd say the Ringlite would be a useful piece of kit for almost any photographer; especially those on the move who tend to find themselves using different studios but still have to bring their own equipment.

So far I've found the Ringlite to be the ideal tool for quick shoots or when I want to carry only a limited amount of equipment.

When I do a shot that would benefit greatly from that special ringflash effect, I find the Ringlite is the perfect replacement.

The last thing I want to do is carry round a big chunky ringflash plus a big, heavy powerpack; and now thankfully I don't have to anymore.

I can now simply pop the Ringlite Converter into one of my bags and attach it to my Gemini flash head whenever I want to; it really is that easy.

One of the things I really like about the Ringlite is how versatile it is. Whether I use it directly, slightly off-axis or even as a fill-light it produces a lovely, soft, even light output without the inconvenient proximity hot-spot that is produced by the more traditional light sources.

I can now honestly say that the Ringlite has taken its place among my permanent collection of reflectors".

“I'd say the Ringlite would be a useful piece of kit for almost any photographer..”



ringlite
converter



BOWENS
the power behind the picture

Bowens International Ltd • 355-361 Old Road • Clacton-On-Sea • Essex • CO15 3RH • UK
BC-255 • Ringlite Converter • 04/08

www.bowens.co.uk